

How to: Draw a Compelling Street Scene (for a planning application)

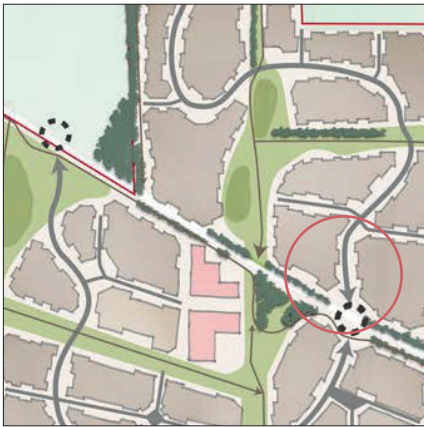


bluepencil

Drawing a street scene for a planning application involves capturing the essence and character of the proposed development within its urban context. Here's a step-by-step guide to creating an effective street scene drawing:

1. Gather Reference Materials:

Start by collecting reference materials, including site plans, elevations, photographs of the existing site, and architectural drawings of the proposed development. These materials will serve as a guide and provide valuable information for accurately depicting the street scene.



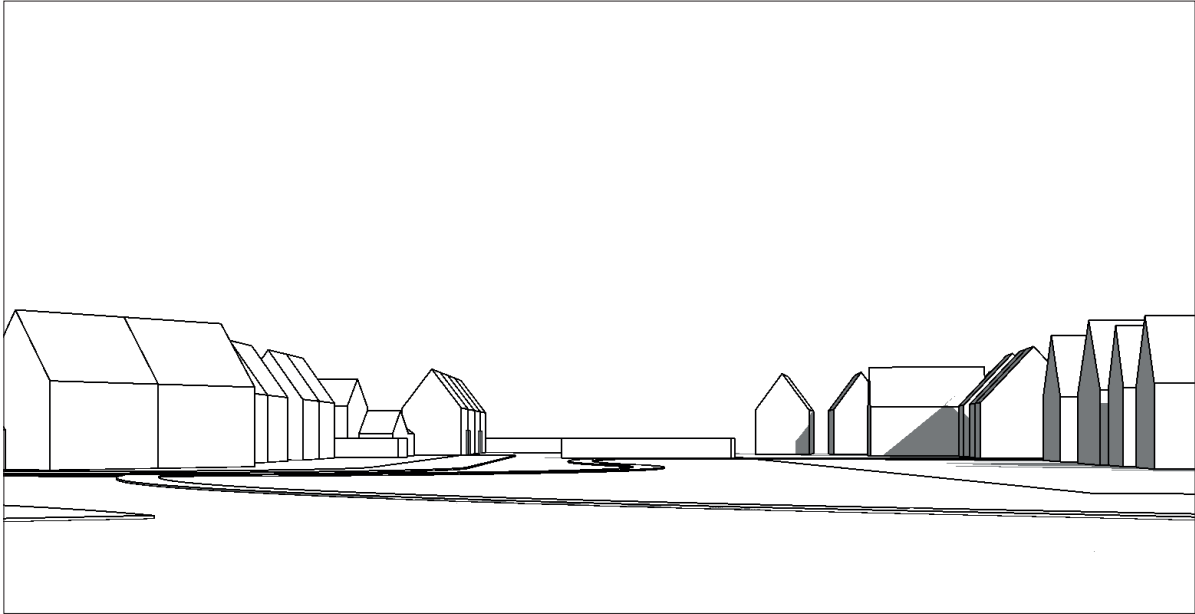
2. Choose a Perspective:

Determine the viewpoint from which the street scene will be depicted. Consider selecting a viewpoint that showcases the proposed development in relation to its surroundings and emphasises key features such as building facades, street furniture, and landscaping elements.



3. Sketch the Composition:

Begin by sketching the basic composition of the street scene, including the layout of buildings, streets, paths, and other elements of the urban environment. Use simple shapes and lines to block out the main features of the scene, ensuring that the proportions and scale are accurate. Change the view if necessary.



4. Add Detail and Context:

Once the best composition is in place, start adding detail and context to the drawing. Include architectural details such as windows, doors, and rooflines, as well as street-level features such as trees, streetlights, benches, and signage. Pay attention to the surrounding buildings, streetscapes, and landmarks to create a sense of place and context for the proposed development.



5. Use Colour and Texture:

Use colour and texture to enhance the realism and visual appeal of the street scene. Apply light washes of colour to differentiate between different materials and surfaces, such as brick, concrete, and asphalt. Add texture to buildings, streets, and landscapes using cross-hatching, stippling, or other shading techniques to create depth and dimension.



5. Add trees and Vegetation:

To convey the atmosphere and landscape character of the street scene, consider adding trees, hedges and shrubs to the drawing. Place them so that the buildings are still visible and make sure the vegetation is appropriate in scale.



7. Refine and Finalise:

Once the initial sketch is complete, take time to refine and finalise the drawing. Include vehicles such as cars, bicycles, or buses to illustrate the movement and activity within the scene. Clean up any rough lines or inconsistencies, add additional details or shading as needed, and ensure that the composition is balanced and visually appealing.



8. Review and Revise:

Before submitting the street scene drawing as part of the planning application, review it carefully to ensure accuracy and completeness. Compare the drawing to the reference materials and make any necessary revisions or adjustments to ensure that it accurately represents the proposed development and its context.

By following these steps and incorporating attention to detail, context, and human scale, you can create a compelling street scene drawing that effectively communicates the vision and impact of the proposed development for the planning application.

